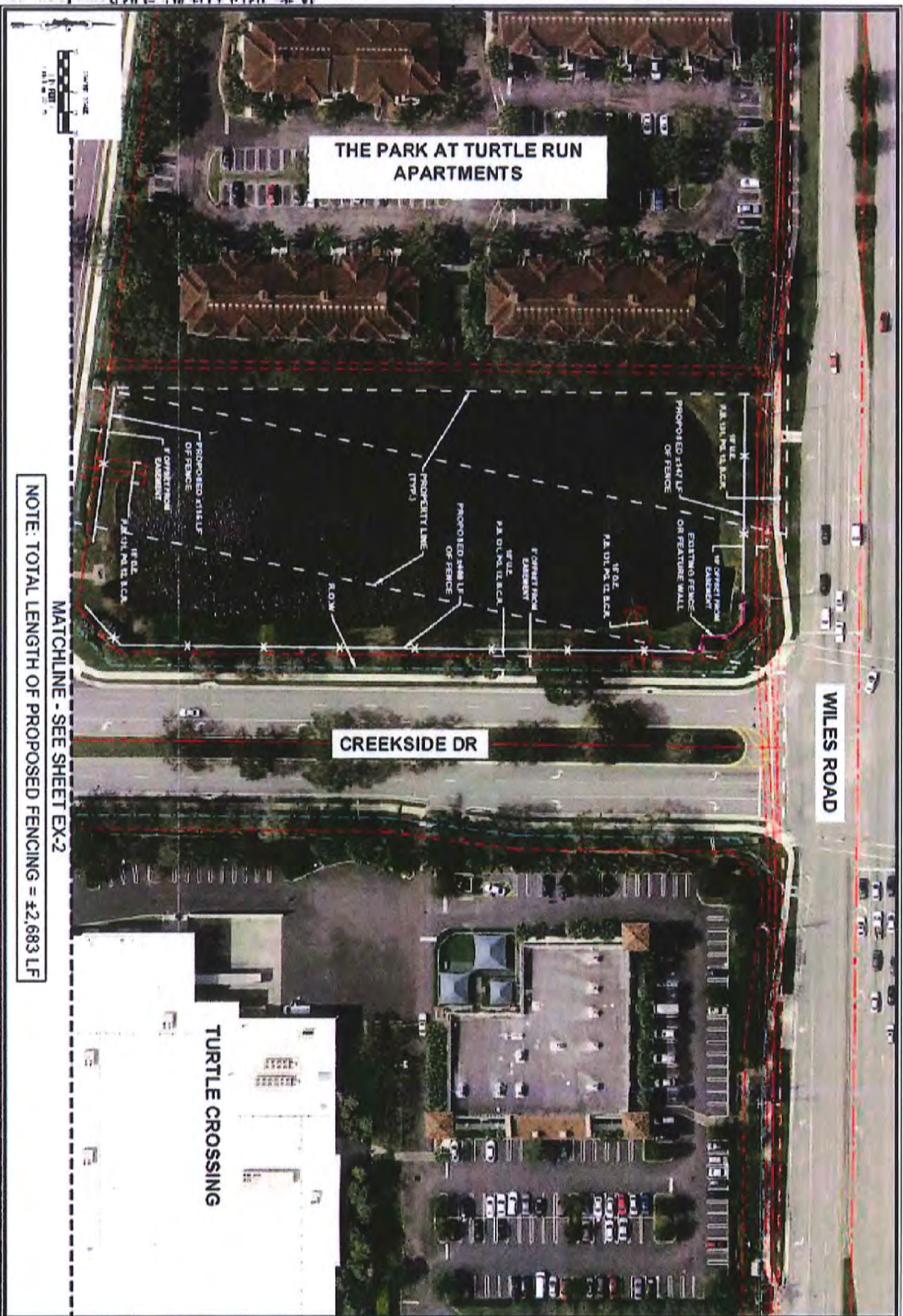


**THE PARK AT TURTLE RUN
APARTMENTS**



NOTE: TOTAL LENGTH OF PROPOSED FENCING = 42,683 LF

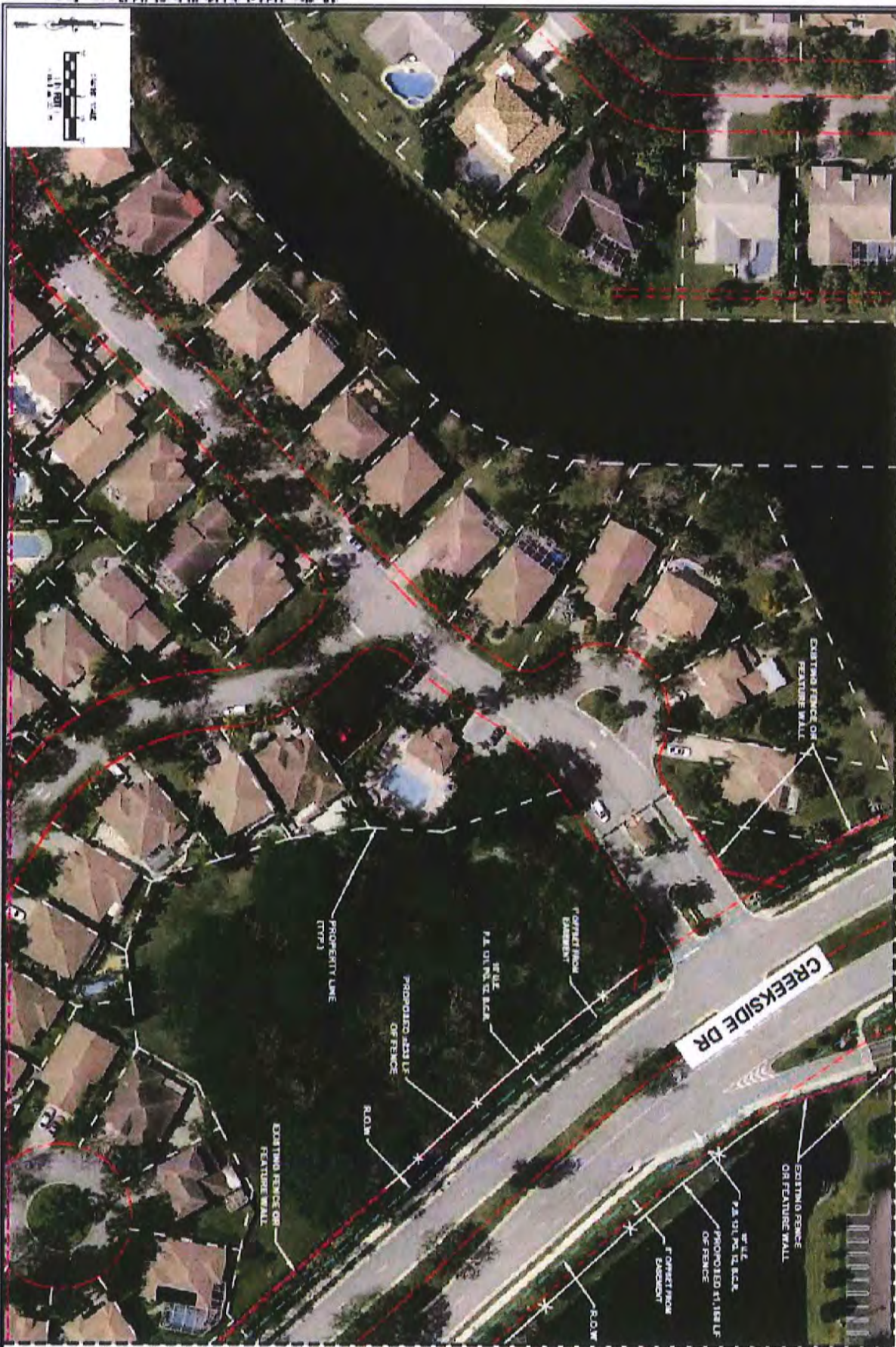
MATCHLINE - SEE SHEET EX-2

TURTLE CROSSING

CREEKSIDE DR

WILES ROAD

<p>TURTLE RUN CORAL SPRINGS FLORIDA</p>	<p>PROPOSED FENCE EXHIBIT</p>	<p>KS KEITH & SCHNARS LD 1337</p>	<p>DATE: _____</p> <p>SCALE: _____</p> <p>PROJECT: _____</p> <p>DATE: _____</p>
--	--------------------------------------	--	---



NOTE: TOTAL LENGTH OF PROPOSED FENCING = 42,683 LF
 MATCHLINE - SEE SHEET EX-2

MATCHLINE - SEE SHEET EX-4

EX-4 1/2" = 100' 1/8" = 25' 1/4" = 50' 3/8" = 75' 1/2" = 100' 3/4" = 150' 1" = 200' 1 1/4" = 250' 1 1/2" = 300' 1 3/4" = 350' 2" = 400' 2 1/4" = 450' 2 1/2" = 500' 2 3/4" = 550' 3" = 600' 3 1/4" = 650' 3 1/2" = 700' 3 3/4" = 750' 4" = 800' 4 1/4" = 850' 4 1/2" = 900' 4 3/4" = 950' 5" = 1000' 5 1/4" = 1050' 5 1/2" = 1100' 5 3/4" = 1150' 6" = 1200' 6 1/4" = 1250' 6 1/2" = 1300' 6 3/4" = 1350' 7" = 1400' 7 1/4" = 1450' 7 1/2" = 1500' 7 3/4" = 1550' 8" = 1600' 8 1/4" = 1650' 8 1/2" = 1700' 8 3/4" = 1750' 9" = 1800' 9 1/4" = 1850' 9 1/2" = 1900' 9 3/4" = 1950' 10" = 2000' 10 1/4" = 2050' 10 1/2" = 2100' 10 3/4" = 2150' 11" = 2200' 11 1/4" = 2250' 11 1/2" = 2300' 11 3/4" = 2350' 12" = 2400' 12 1/4" = 2450' 12 1/2" = 2500' 12 3/4" = 2550' 13" = 2600' 13 1/4" = 2650' 13 1/2" = 2700' 13 3/4" = 2750' 14" = 2800' 14 1/4" = 2850' 14 1/2" = 2900' 14 3/4" = 2950' 15" = 3000' 15 1/4" = 3050' 15 1/2" = 3100' 15 3/4" = 3150' 16" = 3200' 16 1/4" = 3250' 16 1/2" = 3300' 16 3/4" = 3350' 17" = 3400' 17 1/4" = 3450' 17 1/2" = 3500' 17 3/4" = 3550' 18" = 3600' 18 1/4" = 3650' 18 1/2" = 3700' 18 3/4" = 3750' 19" = 3800' 19 1/4" = 3850' 19 1/2" = 3900' 19 3/4" = 3950' 20" = 4000' 20 1/4" = 4050' 20 1/2" = 4100' 20 3/4" = 4150' 21" = 4200' 21 1/4" = 4250' 21 1/2" = 4300' 21 3/4" = 4350' 22" = 4400' 22 1/4" = 4450' 22 1/2" = 4500' 22 3/4" = 4550' 23" = 4600' 23 1/4" = 4650' 23 1/2" = 4700' 23 3/4" = 4750' 24" = 4800' 24 1/4" = 4850' 24 1/2" = 4900' 24 3/4" = 4950' 25" = 5000' 25 1/4" = 5050' 25 1/2" = 5100' 25 3/4" = 5150' 26" = 5200' 26 1/4" = 5250' 26 1/2" = 5300' 26 3/4" = 5350' 27" = 5400' 27 1/4" = 5450' 27 1/2" = 5500' 27 3/4" = 5550' 28" = 5600' 28 1/4" = 5650' 28 1/2" = 5700' 28 3/4" = 5750' 29" = 5800' 29 1/4" = 5850' 29 1/2" = 5900' 29 3/4" = 5950' 30" = 6000' 30 1/4" = 6050' 30 1/2" = 6100' 30 3/4" = 6150' 31" = 6200' 31 1/4" = 6250' 31 1/2" = 6300' 31 3/4" = 6350' 32" = 6400' 32 1/4" = 6450' 32 1/2" = 6500' 32 3/4" = 6550' 33" = 6600' 33 1/4" = 6650' 33 1/2" = 6700' 33 3/4" = 6750' 34" = 6800' 34 1/4" = 6850' 34 1/2" = 6900' 34 3/4" = 6950' 35" = 7000' 35 1/4" = 7050' 35 1/2" = 7100' 35 3/4" = 7150' 36" = 7200' 36 1/4" = 7250' 36 1/2" = 7300' 36 3/4" = 7350' 37" = 7400' 37 1/4" = 7450' 37 1/2" = 7500' 37 3/4" = 7550' 38" = 7600' 38 1/4" = 7650' 38 1/2" = 7700' 38 3/4" = 7750' 39" = 7800' 39 1/4" = 7850' 39 1/2" = 7900' 39 3/4" = 7950' 40" = 8000' 40 1/4" = 8050' 40 1/2" = 8100' 40 3/4" = 8150' 41" = 8200' 41 1/4" = 8250' 41 1/2" = 8300' 41 3/4" = 8350' 42" = 8400' 42 1/4" = 8450' 42 1/2" = 8500' 42 3/4" = 8550' 43" = 8600' 43 1/4" = 8650' 43 1/2" = 8700' 43 3/4" = 8750' 44" = 8800' 44 1/4" = 8850' 44 1/2" = 8900' 44 3/4" = 8950' 45" = 9000' 45 1/4" = 9050' 45 1/2" = 9100' 45 3/4" = 9150' 46" = 9200' 46 1/4" = 9250' 46 1/2" = 9300' 46 3/4" = 9350' 47" = 9400' 47 1/4" = 9450' 47 1/2" = 9500' 47 3/4" = 9550' 48" = 9600' 48 1/4" = 9650' 48 1/2" = 9700' 48 3/4" = 9750' 49" = 9800' 49 1/4" = 9850' 49 1/2" = 9900' 49 3/4" = 9950' 50" = 10000'	DATE: _____ DRAWN BY: _____ CHECKED BY: _____ SCALE: _____ SHEET NO.: _____ TOTAL SHEETS: _____	TURTLE RUN CORAL SPRINGS FLORIDA PROPOSED FENCE EXHIBIT	 LB 1337 4000 W. 20th Ave. - Suite 100 - Fort Lauderdale, FL 33311
---	--	---	--

